



GENERAL INFO	
<b>Basic Function</b>	Harbour duties, berthing, towing, firefighting and assisting pollution control
<b>Design</b>	Macduff Ship Design Ltd.

MAIN PARTICULARS	
<b>Length Over All (LOA)</b>	25m
<b>Breadth (B)</b>	10.5m
<b>Depth (D)</b>	4.75m
<b>Draught (Max)</b>	3.65m
<b>Bollard Pull</b>	48 TBP (Aft) 45 TBP (Fwd)
<b>Speed</b>	12 Knots
<b>Accommodation</b>	11 Persons

CLASSIFICATION	
<b>Class Society</b>	Bureau Veritas (BV)
<b>Class Notation</b>	BV $\boxtimes$ Hull • Mach, Tug Fire Fighting Ship 1 - Water Spaying, AUT-UMS, Unrestricted Navigation

TANK CAPACITIES	
<b>Fuel</b>	86,234 litres
<b>Fresh Water</b>	48,344 litres
<b>Foam</b>	7,634 litres
<b>Grey Water</b>	5,227 litres
<b>Black Water</b>	5,169 litres
<b>Lub Oil</b>	2,475 litres
<b>Dirty Oil</b>	2,475 litres
<b>Hydraulic Oil</b>	4,889 litres
<b>Propeller Oil</b>	2,637 litres

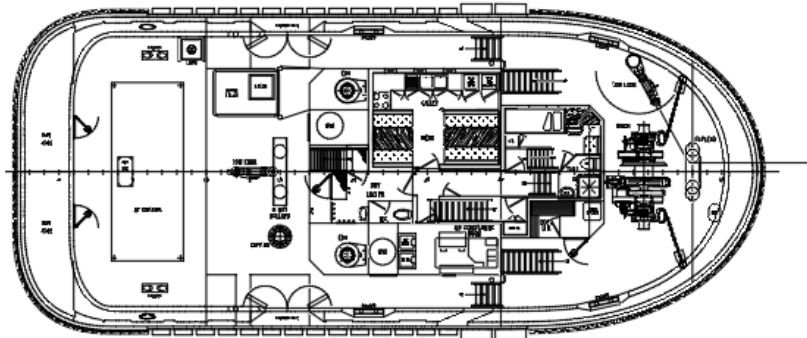
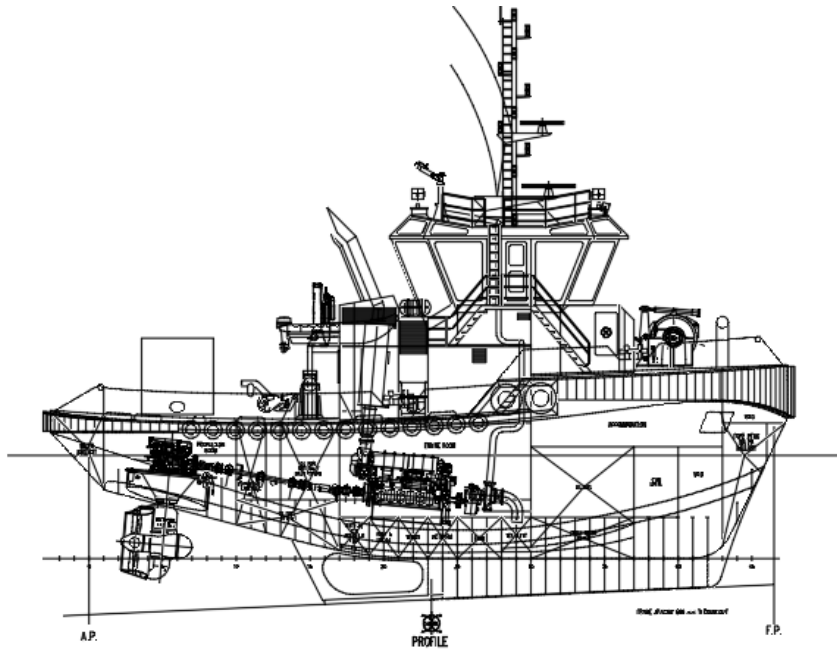
ACCOMMODATION & NAVIGATION	
<b>Accommodation</b>	3 x 1-man Cabin (en-suite), 2 x 2-man Cabins 5 x WC & Shower Galley & Mess-Room
<b>HVAC Units</b>	Cooling Capacity :2x27kW Additional 1 x 24000 BTU for wheelhouse and 1 x 12000 BTU for ECR.
<b>Chairs (Helmsman)</b>	1 x Helmsman
<b>Search Light</b>	2 x 1000 W
<b>Navigation &amp; Communication Equipment</b>	1 x Radar 1 x ECDIS 1 x Echo sounder 1 x Speed Log 1 x AIS 1 x GPS Receiver 1 x Magnetic Compass 1 x Autopilot 1 x Gyrocompass 1 x BNWAS 2 x VHF 1 x MF/HF 1 x NAVTEX 4 x GMDSS VHF 1 x EPIRB 1 x SART 1 x Wind Sensor 1 x Handheld GPS 1 x VSP Telephone 1 x GPS Compass 1 x Satellite Log 1 x Weather Fax 1 x Talkback system 1 x PA & GA System 1 x Aldis lamp

FIRE & SAFETY	
<b>Safety Equipment</b>	2 x 12-man inflatable Life raft
<b>External Fi-Fi System &amp; Water Spring</b>	2 x Remote operated water, foam monitor
<b>Fixed Fire Fighting Equipment</b>	FM200- Fire Fighting System
<b>Fire &amp; Smoke Detection Systems</b>	For E/R, Accommodation and all compartment monitored from wheelhouse & call (alarm) points at several locations' c/w general alarm system from the central alarm panel
<b>Rescue Boat</b>	4m GRP Rescue Boat, 6 Persons, 25 HP outboard engine

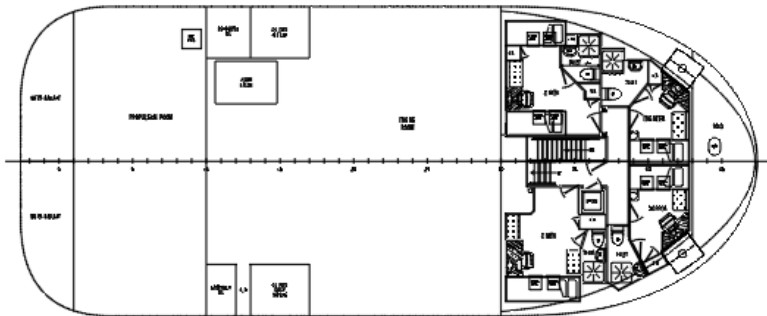
DECK MACHINERY	
<b>Towing Winch &amp; Windlass</b>	1 x Hydraulic driven, locally (deck) and remote (bridge) controlled. 100kN @ 34m/min. Rope Capacity 110 m for 88mm dia rope . MBL 1300 kN. Double Drum
<b>Towing Hook</b>	1 x 65 tons SWL, quick release disk type
<b>Anchors &amp; Chain</b>	2x HHP, Pool type, 16mm Q3 Chain Cable
<b>Capstan</b>	1 x Hydraulic driven, locally (deck) controlled , 50 kN @ 15 m/min .
<b>Deck Crane</b>	Hydraulic operated, 3500kg@4m , Outreach 12m

MACHINERY	
<b>Main Engine</b>	2 x 1529kW @ 1800 rpm
<b>Shafting &amp; Propeller</b>	2x ASD, Fix Pitch, 2200mm dia propeller
<b>Generator</b>	2 x 195 ekW , 440 V , 60 Hz
<b>Harbour Generator</b>	1 x 88 ekW , 440 V , 60 Hz
<b>Fi-Fi Pump</b>	Fire pump Capacity 2 x 1100 m <sup>3</sup> /h, Water/Foam Monitor 2 x 450/300 m <sup>3</sup> /h , Integrated control System , External Water Spray System
<b>Air Compressor &amp; Air Bottle</b>	1 x 1.5 kW 10 bar Air Compressor, 1 x 18 m <sup>3</sup> /h dryer, 1 x 100 lt air receiver
<b>Oily Water Separator</b>	1 x 0.5 m <sup>3</sup> /h and 15 ppm.
<b>Sewage Treatment System</b>	1 x for 16 persons
<b>Bilge &amp; Fire &amp; GS Pump</b>	2 x 25 m <sup>3</sup> /h @ 4 bar
<b>Fuel Transfer Pump</b>	1 x 10 m <sup>3</sup> /h @ 2 bar
<b>Waste Oil Pump</b>	1 x 3.5 m <sup>3</sup> /h @ 2 bar
<b>Sewage Transfer Pump</b>	1 x 6.9 m <sup>3</sup> /h @ 2 bar

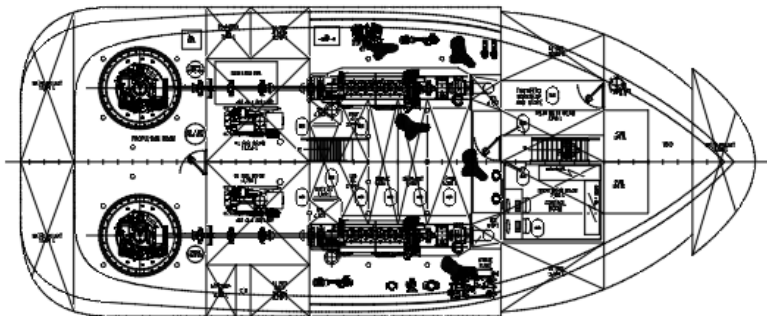
<b>Oily Bilge Pump</b>	1 x 3.5 m <sup>3</sup> /h @ 2 bar
<b>ASD SW Cooling Pump</b>	2 x 38 m <sup>3</sup> /h @ 2 bar
<b>Aux Cooler SW Cooling Pump</b>	2 x 55 m <sup>3</sup> /h @ 2 bar
<b>Emg. Fire Pump</b>	1 x 25 m <sup>3</sup> /h @ 2.5 bar
<b>Lub Oil Pump</b>	1 x 2 m <sup>3</sup> /h @ 2 bar
<b>Portable Fire Pump</b>	1 x 2 m <sup>3</sup> /h @ 3 bar
<b>ASD Cooling FW Pump</b>	2 x 25 m <sup>3</sup> /h @ 2 bar
<b>Aux Cooler FW Cooling Pump</b>	2 x 38 m <sup>3</sup> /h @ 2 bar
<b>Generator SW Cooling Pump</b>	2 x 40 m <sup>3</sup> /h @ 2 bar
<b>FW Hydrophore Set</b>	1 x 6 kW-100Lt
<b>Fuel Purifier</b>	1 x 1000 l/h



MAIN AND FOOSLE DECKS



ACCOMMODATION DECK



MACHINERY DECK