



GENERAL INFO	
<b>Basic Function</b>	Harbour duties, berthing, towing, firefighting and assisting pollution control
<b>Design</b>	Robert Allan Ltd.

MAIN PARTICULARS	
<b>Length Over All (LOA)</b>	32.80 m
<b>Breadth (B)</b>	12.80 m
<b>Depth (D)</b>	5.37 m
<b>Draught (Max)</b>	5.70 m
<b>Bollard Pull</b>	80 TBP (Aft) 82 TBP (Fwd)
<b>Speed</b>	13.5 Knots
<b>Accommodation</b>	8 Persons

CLASSIFICATION	
<b>Class Society</b>	Bureau Veritas (BV)
<b>Class Notation</b>	BV $\nabla$ Hull $\nabla$ Mach, Tug Fire Fighting Ship 1 - Water Spaying, AUT-UMS, Unrestricted Navigation

TANK CAPACITIES	
<b>Fuel</b>	180,500 litres
<b>Fresh Water</b>	35,800 litres
<b>Sewage</b>	11,700 litres
<b>Recovered Oil</b>	64,800 litres
<b>Lube Oil</b>	2,200 litres
<b>Propeller Oil</b>	600 litres
<b>Dirty Oil / Bilge</b>	3,300 litres
<b>Hydraulic Oil</b>	4,200 litres
<b>Foam</b>	12,200 litres

ACCOMMODATION & NAVIGATION	
<b>Accommodation</b>	2 x 1-man Cabin 3 x 2-man Cabins 2 x WC & Shower Galley & Mess-Room
<b>Navigation &amp; Communication Equipment</b>	1 x X-Band Arpa Radar 1 x Chart Plotter 1 x Autopilot 1 x Echosounder-200 Khz 1 x Satellite Compass 1 x GPS Navigator 1 x Navtex Receiver 1 x Doppler Speed Log 1 x Weather Station 1 x AIS 2 x VHF Radio Telephone 1 x MF/HF Radio Telephone 1 x Integrated Communication System 1 x Public Address System 1 x Batteryless Telephone Sys. 1 x BNWAS 2 x Inmarsat-C Terminal

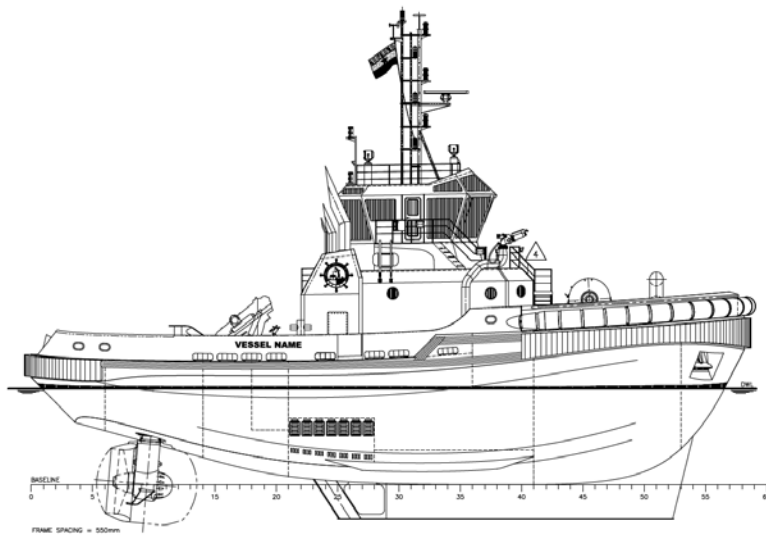
FIRE & SAFETY	
<b>Safety Equipment</b>	2 x 10-man inflatable Life raft
<b>External Fi-Fi System &amp; Water Spring</b>	Dedicated diesel driven 1 x 2750 m <sup>3</sup> /h pump and 2 x Remote operated water, foam monitor
<b>Fixed Fire Fighting</b>	CO <sup>2</sup> - Fire Fighting System
<b>Fire &amp; Smoke Detection Systems</b>	All compartment monitored from wheelhouse & call (alarm) points at several locations' c/w



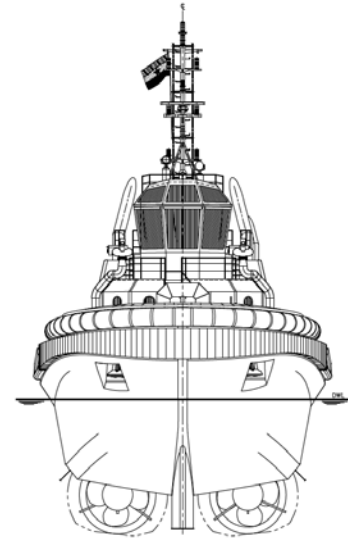
	general alarm system from the central alarm panel
--	---

DECK MACHINERY	
<b>Anchor &amp; Chain</b>	2x HHP, YP14 type, 494kg each & total 302,5m - 22mm grade 2 chain
<b>Fwd Towing Winch &amp; Windlass</b>	Hydraulic Operated, Split drum, min.225 tons break load, nominal pull 45 tons at 11 m/min., combined with hydraulic anchor winch, with warping head
<b>Towing Hook</b>	1 x disk type, 100 tons SWL, quick release, on aft deck.
<b>Capstan</b>	On AFT deck, hydraulic, 4,5 tons pull at 15m/min
<b>Deck Crane</b>	Hydraulic operated, 2000 kg @ 8,84m, 260 bar working pressure, lifting moment 345 kNm
<b>Pollution Equipment</b>	Removable dispersant/detergent spraying gear on each ship side, dispersant/detergent pump-set c/w gear, oil containment booms, floating oil skimmers, independent power/ pump set.
<b>Fenders</b>	Heavy duty rubber fenders, cylinder, W and D type

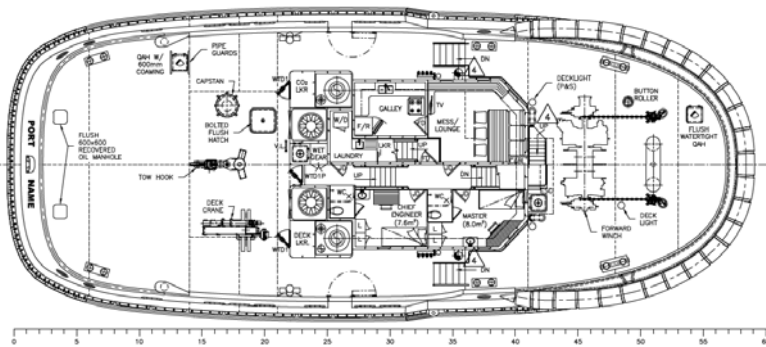
MACHINERY	
<b>Main Engine</b>	2 x 2560 kw @ 1800 rpm
<b>Shafting &amp; Propeller</b>	2 x ASD, FP, 2.60 m propeller, HD Slipping Clutch
<b>Generator</b>	2 x 136 ekW, 380V, 50Hz
<b>Aux. Diesel for Fi-Fi</b>	1 x 1190 kW @ 1800 rpm
<b>Service Air Compressor</b>	1 x 204 lt/min - 10 bar + 100 lt air bottle
<b>Oily Water Separator</b>	1 x 0.5 m <sup>3</sup> /h and 15 ppm.
<b>Fuel Separator</b>	1 x 1850/h for MDO, 13cst
<b>GS &amp; Bilge &amp; Fire Pump</b>	2 x 25 m <sup>3</sup> /h x 4,5 bar
<b>Fuel Transfer Pump</b>	2 x 10 m <sup>3</sup> /h x 2 bar
<b>Domestic Service Pump</b>	2 x fresh water pumps ~ 3m <sup>3</sup> /h, 3-5bar/ with 6kw heater tank and 100lt pressure vessel
<b>Oily Water Pump</b>	1 x 3.5 m <sup>3</sup> /h x 2 bar
<b>Sludge Pump</b>	1 x 3.5 m <sup>3</sup> /h x 2 bar
<b>Emg. Diesel Fire Pump</b>	1 x 25 m <sup>3</sup> /h x 5 bar
<b>Sewage Discharge Pump</b>	1 x 10 m <sup>3</sup> /h x 2 bar
<b>A/C Cooling Pump</b>	1 x 12 m <sup>3</sup> /h x 2 bar
<b>HPP Cooling Pump</b>	1 x 12 m <sup>3</sup> /h x 2 bar
<b>ASD Cooling Pump</b>	1 x 12 m <sup>3</sup> /h x 2 bar



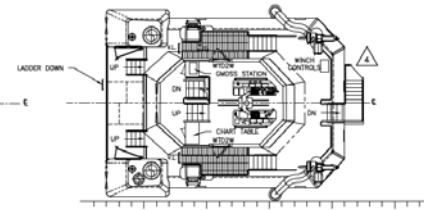
**OUTBOARD PROFILE**



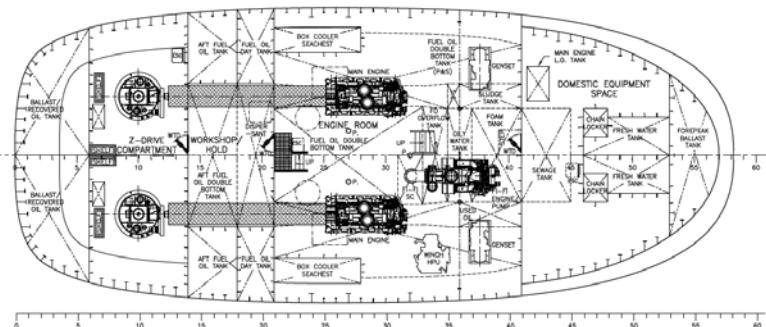
**BOW VIEW**



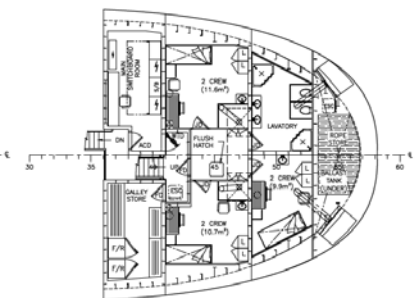
**MAIN DECK PLAN**



**BRIDGE DECK PLAN**



**HOLD PLAN**



**LOWER ACCOMMODATIONS PLAN**